

Internal ALU boxes for COBRA – trailer

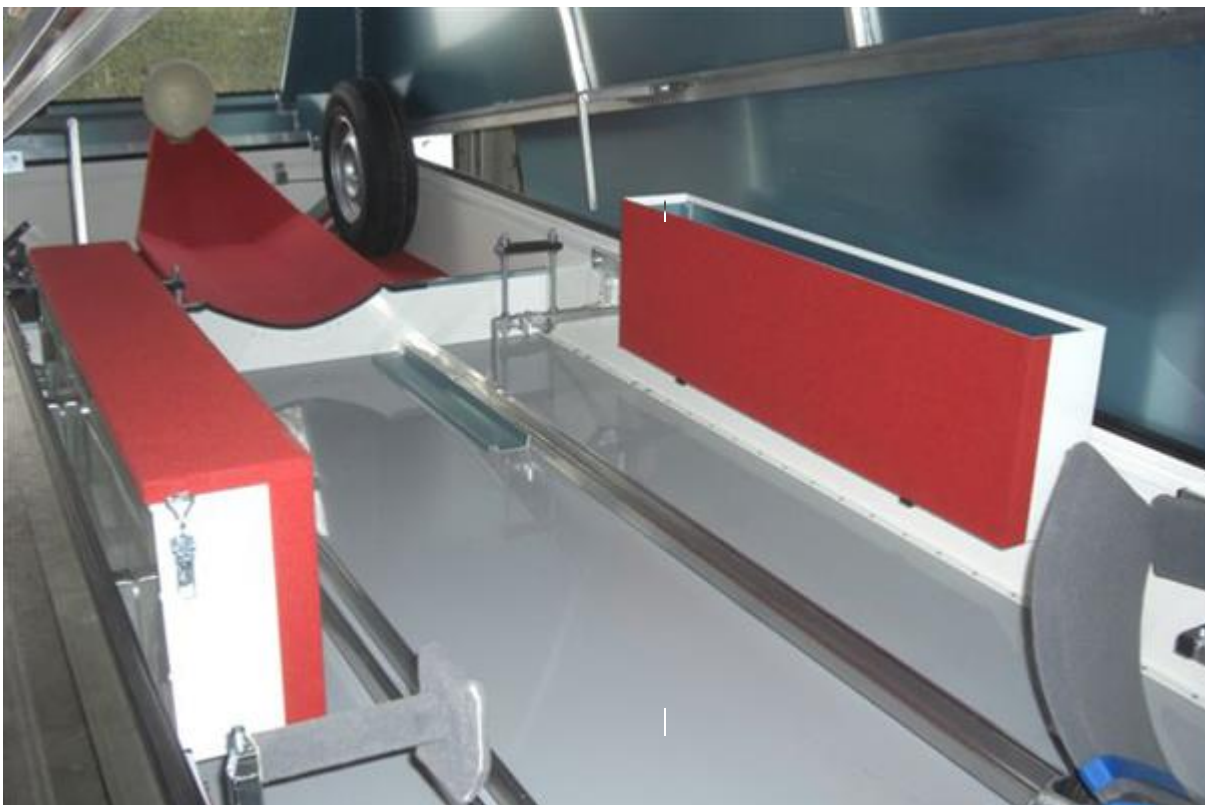
These storage boxes are ideal for open-class aircraft

Data:

- ASW 22, ASH 25 Nimbus 3, Nimbus 4*: 2500 mm lang x 3500 mm high x 160 mm wide
- ASH 30, Eta, EB 28, Lak 20: 1250 mm long
- The side surface towards the wing is carpet-padded.
- Version with or without cover

Advantages of ALU boxes:

- long enough for a tow bar
- Wide enough for fuel canisters
- Is closer to the center of gravity than the front box, therefore also suitable for heavier objects.



Storage compartment with and without lid, carpet upholstered and spacious!

* With clip-on sash holder in the rear upper section. If clip-on sash holder in the lower section at the front :1250 long.